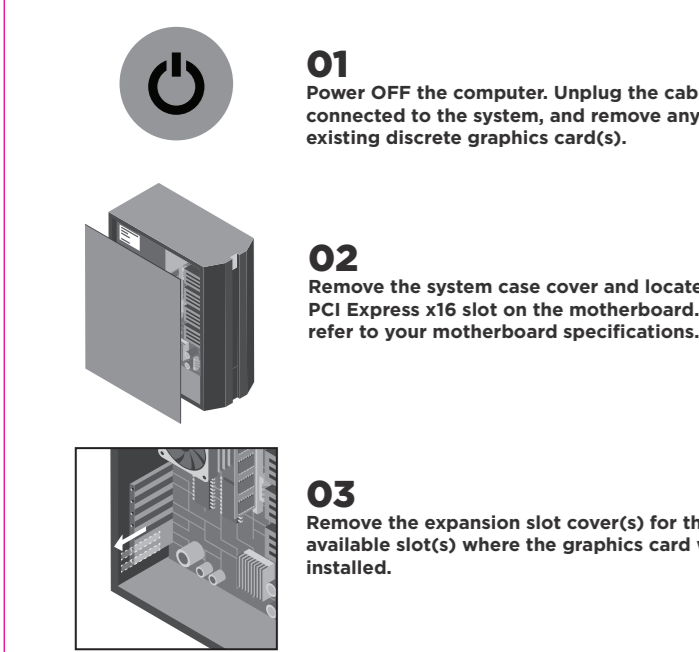


# GRAPHICS CARD INSTALLATION

**01**  
Power Off the computer. Unplug the cable(s) connected to the system, and remove any existing discrete graphics card(s).

**02**  
Remove the system case cover and locate the PCI Express x16 slot on the motherboard. Please refer to your motherboard specifications.

**03**  
Remove the expansion slot cover(s) for the available slot(s) where the graphics card will be installed.



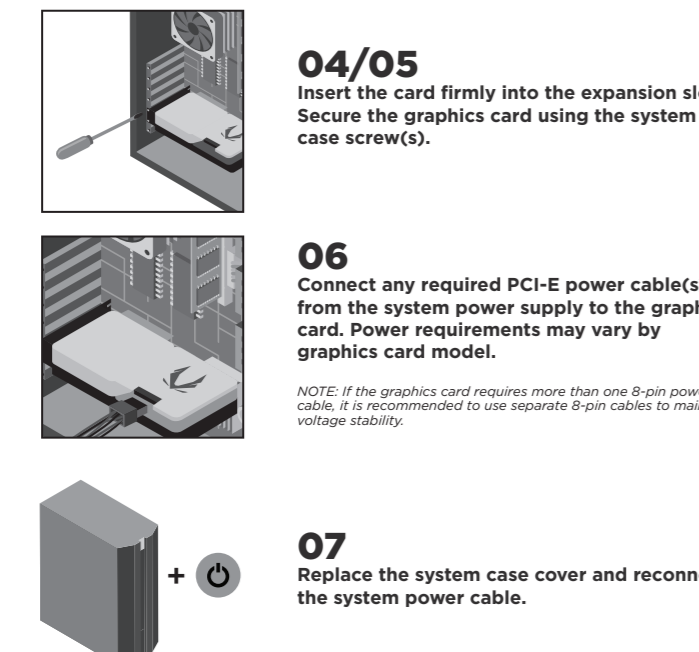
# GRAPHICS CARD INSTALLATION

**04/05**  
Insert the card firmly into the expansion slot. Secure the graphics card using the system case screw(s).

**06**  
Connect any required PCI-e power cable(s) from the system power supply to the graphics card. Power requirements may vary by graphics card model.

NOTE: If the graphics card requires more than one 8-pin power cable, it is recommended to use separate 8-pin cables to maintain voltage stability.

**07**  
Replace the system case cover and reconnect the system power cable.



# GEFORCE DRIVER INSTALLATION

PLEASE MAKE SURE TO HAVE THE LATEST AVAILABLE DRIVERS INSTALLED FOR YOUR ZOTAC GAMING GEFORCE GRAPHICS CARD FOR OPTIMAL GAMING PERFORMANCE.

NOTE: The latest GeForce Drivers are available at GEFORCE.com. An Internet connection is required to proceed.

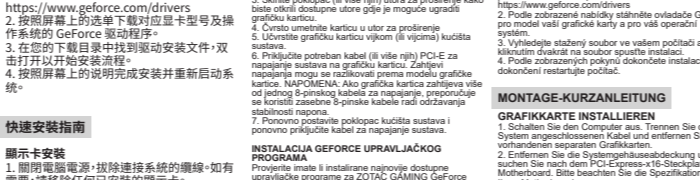


- 1) Scan the above QR code to go to the NVIDIA GEFORCE™ Drivers website or enter the URL into your system's Internet browser - <https://www. GeForce.com/drivers>
- 2) Follow the onscreen menu to download the GeForce drivers for your graphics card model and OS.
- 3) Locate the downloaded file on your system and double click it to begin the installation process.
- 4) Follow the on-screen instructions to complete the installation and restart the system once done.

# GEFORCE DRIVER INSTALLATION

PLEASE MAKE SURE TO HAVE THE LATEST AVAILABLE DRIVERS INSTALLED FOR YOUR ZOTAC GAMING GEFORCE GRAPHICS CARD FOR OPTIMAL GAMING PERFORMANCE.

NOTE: The latest GeForce Drivers are available at GEFORCE.com. An Internet connection is required to proceed.



- 1) Scan the above QR code to go to the NVIDIA GEFORCE™ Drivers website or enter the URL into your system's Internet browser - <https://www. GeForce.com/drivers>
- 2) Follow the onscreen menu to download the GeForce drivers for your graphics card model and OS.
- 3) Locate the downloaded file on your system and double click it to begin the installation process.
- 4) Follow the on-screen instructions to complete the installation and restart the system once done.

# CONNECT A MONITOR

CONNECTING A DISPLAY TO THE GRAPHICS CARD



**MORE YOU NEED TO KNOW**

ZOTAC.COM



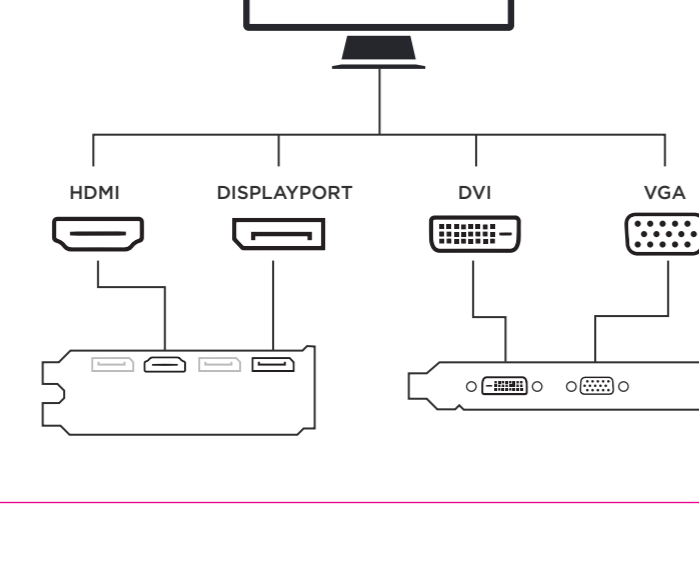
# USEFUL LINKS

**PRODUCT REGISTRATION**  
Register your new product on [ZOTAC.COM](http://ZOTAC.COM) to get FREE extended product warranty where applicable. Product registration must be successfully submitted within a limited time of new product purchase. Availability and window of time for product registration may vary by product and region.

**FIRESTORM UTILITY**  
Our advanced fine-tuning software utilizes a simplified design to allow easy and immersive control of your ZOTAC and ZOTAC GAMING graphics cards. Monitor GPU performance, adjust the speed of clock, memory and fan, customize fan profile as well as SPECTRA RGB lighting, and do much more.

**SUPPORT/CONTACT US**  
Need any help with your ZOTAC products? Please go to our Support page to find the answers, or simply contact us so we can provide the needed support.

Failure to follow the warranty terms and conditions will result in an automatic void of the ZOTAC warranty. The warranty does not cover normal wear and tear items such as the cooling fan.



# WARRANTY

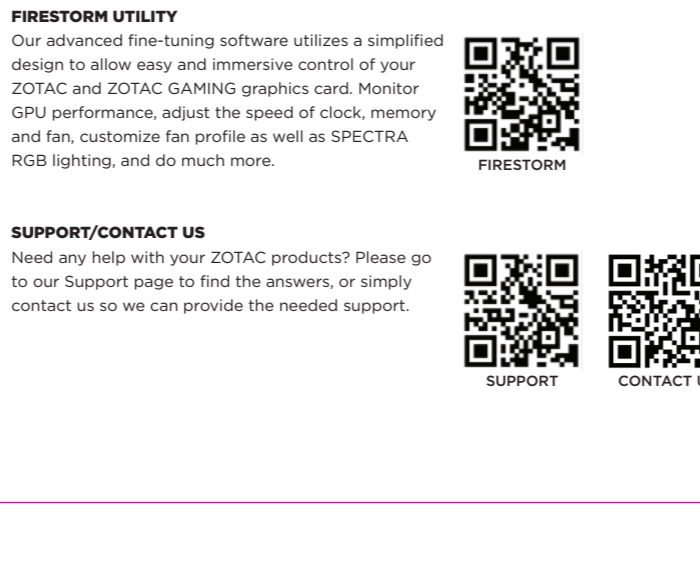
ZOTAC Technology Limited stands by the quality of its products with a limited warranty. The ZOTAC warranty ensures all products are free of material and workmanship defects from the factory. The warranty applies to the original purchaser and is non-transferable.

The ZOTAC warranty is only applicable under the following conditions:  
 • A copy of the original sales receipt is kept.  
 • Damage to the product was not due to user installation.  
 • User did not damage the product, including abuse, over-cleaning, natural disaster, negligence, misuse, modifications (cooling included), power supply, damage due to the result of other damaged components, etc.  
 • Product was used for its intended purpose.

It is up to the original purchaser to obtain warranty service. To submit a ZOTAC graphics card for warranty service, the owner must contact the regional ZOTAC Customer Service where available or the original reseller within the standard warranty period.

All warranty conditions and terms are subject to change without prior notice. For current warranty details, please check our online policies at [ZOTAC.COM](http://ZOTAC.COM)

**NOTE!**  
ZOTAC Technology Ltd. reserves the right to void the warranty if:  
 • The product is physically modified, unless otherwise stated.  
 • If user purchased the card second hand.  
 • If user fails to produce a copy of the original sales receipt.  
 • User used the product in a way it was not intended for.



# EXTENDED WARRANTY

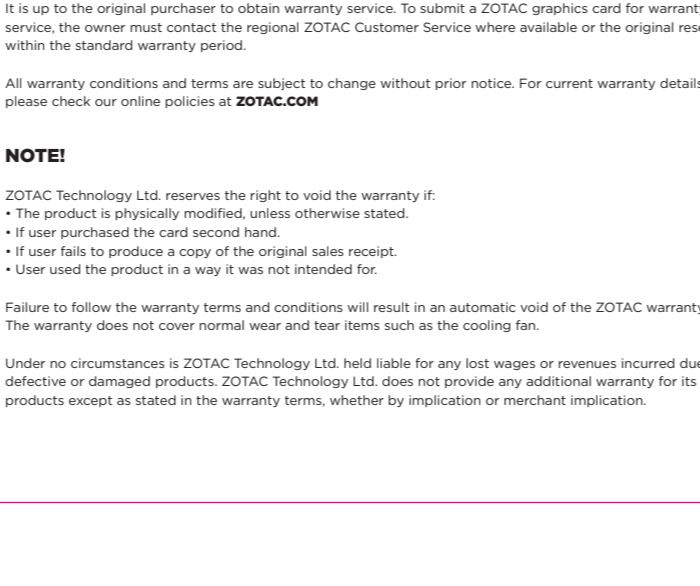
ZOTAC products come with a standard warranty period. In addition, customers will be entitled to extended product warranty through an online product registration process within a limited time of new product purchase where applicable. ZOTAC reserves the right to change the terms and conditions without advance notice.

Product warranty will not be extended if: (1) the product is repaired, modified or altered, unless such repair, modification or alteration is authorized in writing by ZOTAC Technology Limited, (2) the serial number of the product is damaged or missing, or (3) the customer does not complete the product registration within the registration window of the purchase date. Products can be registered only at [ZOTAC.COM](http://ZOTAC.COM)

NOTE: All warranty conditions and terms are subject to change without prior notice. For current warranty details, please check our online policies at [ZOTAC.COM](http://ZOTAC.COM)

**NOTE!**  
ZOTAC Technology Ltd. reserves the right to void the warranty if:  
 • The product is physically modified, unless otherwise stated.  
 • If user purchased the card second hand.  
 • If user fails to produce a copy of the original sales receipt.  
 • User used the product in a way it was not intended for.

Under no circumstances is ZOTAC Technology Ltd. held liable for any lost wages or revenues incurred due to defective or damaged products. ZOTAC Technology Ltd. does not provide any additional warranty for its products except as stated in the warranty terms, whether by implication or merchant implication.



# GUIDE D'INSTALLATION RAPIDE

INSTALLATION DE LA CARTE GRAPHIQUE GEFORCE

1. Éteignez le système et débranchez les câbles du système.
2. Déterminez le emplacement de la carte graphique sur la carte mère.
3. Retirez le couvercle de la carte mère.
4. Insérez la carte graphique dans le slot PCI Express x16.
5. Serrez les vis de fixation.
6. Branchez la carte graphique à l'alimentation de la carte mère.
7. Vérifiez que la carte est correctement installée.
8. Allumez le système et vérifiez que la carte est reconnue.
9. Téléchargez les pilotes de la carte graphique sur le site Web de NVIDIA.
10. Installez les pilotes et redémarrez le système.

QUÉBEC: Téléchargez les pilotes de la carte graphique sur le site Web de NVIDIA.

NOTE: Les pilotes de la carte graphique sont disponibles sur le site Web de NVIDIA.

GEFORCE DRIVER INSTALLATION

1. Scan the above QR code to go to the NVIDIA GEFORCE™ Drivers website or enter the URL into your system's Internet browser - <https://www. GeForce.com/drivers>
2. Follow the onscreen menu to download the GeForce drivers for your graphics card model and OS.
3. Locate the downloaded file on your system and double click it to begin the installation process.
4. Follow the on-screen instructions to complete the installation and restart the system once done.

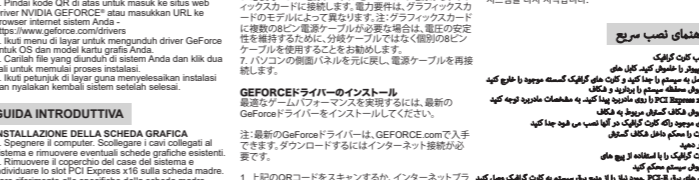
GEFORCE DRIVER INSTALLATION

1. Scan the above QR code to go to the NVIDIA GEFORCE™ Drivers website or enter the URL into your system's Internet browser - <https://www. GeForce.com/drivers>
2. Follow the onscreen menu to download the GeForce drivers for your graphics card model and OS.
3. Locate the downloaded file on your system and double click it to begin the installation process.
4. Follow the on-screen instructions to complete the installation and restart the system once done.

# GEFORCE DRIVER INSTALLATION

PLEASE MAKE SURE TO HAVE THE LATEST AVAILABLE DRIVERS INSTALLED FOR YOUR ZOTAC GAMING GEFORCE GRAPHICS CARD FOR OPTIMAL GAMING PERFORMANCE.

NOTE: The latest GeForce Drivers are available at GEFORCE.com. An Internet connection is required to proceed.

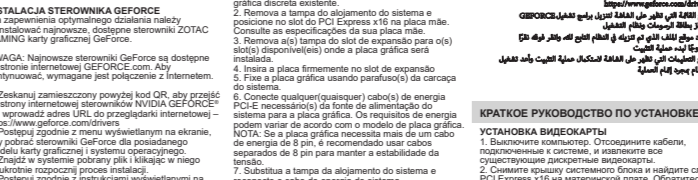


- 1) Scan the above QR code to go to the NVIDIA GEFORCE™ Drivers website or enter the URL into your system's Internet browser - <https://www. GeForce.com/drivers>
- 2) Follow the onscreen menu to download the GeForce drivers for your graphics card model and OS.
- 3) Locate the downloaded file on your system and double click it to begin the installation process.
- 4) Follow the on-screen instructions to complete the installation and restart the system once done.

# GEFORCE DRIVER INSTALLATION

PLEASE MAKE SURE TO HAVE THE LATEST AVAILABLE DRIVERS INSTALLED FOR YOUR ZOTAC GAMING GEFORCE GRAPHICS CARD FOR OPTIMAL GAMING PERFORMANCE.

NOTE: The latest GeForce Drivers are available at GEFORCE.com. An Internet connection is required to proceed.

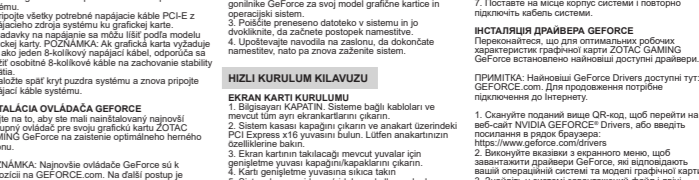


- 1) Scan the above QR code to go to the NVIDIA GEFORCE™ Drivers website or enter the URL into your system's Internet browser - <https://www. GeForce.com/drivers>
- 2) Follow the onscreen menu to download the GeForce drivers for your graphics card model and OS.
- 3) Locate the downloaded file on your system and double click it to begin the installation process.
- 4) Follow the on-screen instructions to complete the installation and restart the system once done.

# GEFORCE DRIVER INSTALLATION

PLEASE MAKE SURE TO HAVE THE LATEST AVAILABLE DRIVERS INSTALLED FOR YOUR ZOTAC GAMING GEFORCE GRAPHICS CARD FOR OPTIMAL GAMING PERFORMANCE.

NOTE: The latest GeForce Drivers are available at GEFORCE.com. An Internet connection is required to proceed.



- 1) Scan the above QR code to go to the NVIDIA GEFORCE™ Drivers website or enter the URL into your system's Internet browser - <https://www. GeForce.com/drivers>
- 2) Follow the onscreen menu to download the GeForce drivers for your graphics card model and OS.
- 3) Locate the downloaded file on your system and double click it to begin the installation process.
- 4) Follow the on-screen instructions to complete the installation and restart the system once done.

